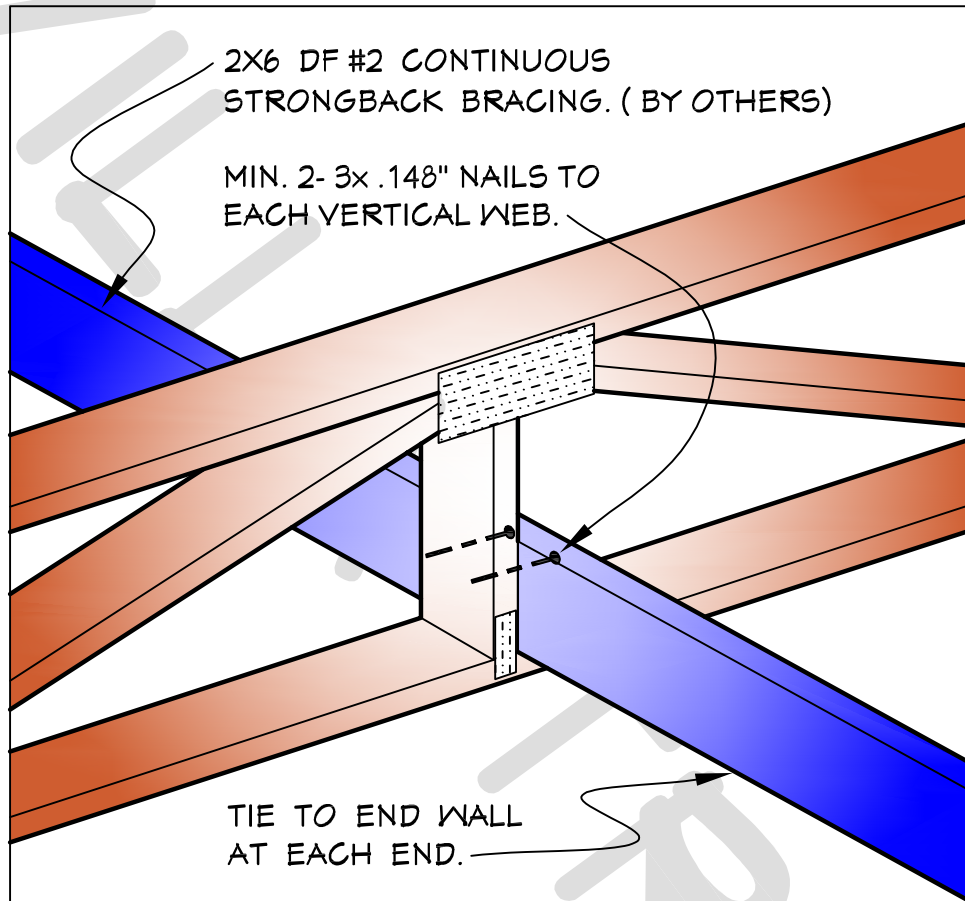


FLOOR STRONGBACK BRACING



REQ'D. BRACING PER FLOOR TRUSS SPAN

0'	to	10'	NOT REQUIRED
10'	to	20'	1 ROW (MID-POINT)
20'	to	28'	2 ROWS (AT $\frac{1}{3}$ POINTS)
28'	to	40'	3 ROWS (AT $\frac{1}{4}$ POINTS)

NOTES: SPAN DEFINED AS BETWEEN BEARING POINTS.
MAXIMUM BRACE SPACING 10'-0" O.C.