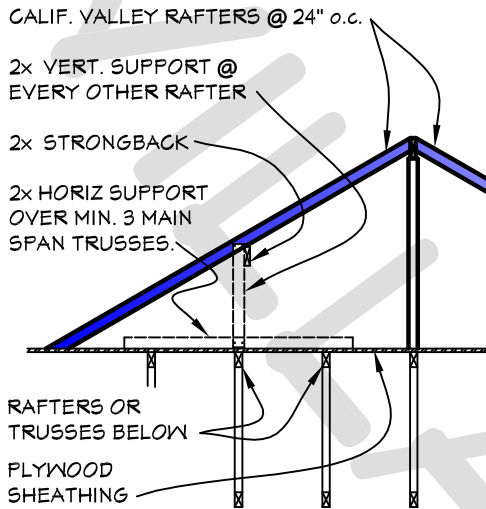
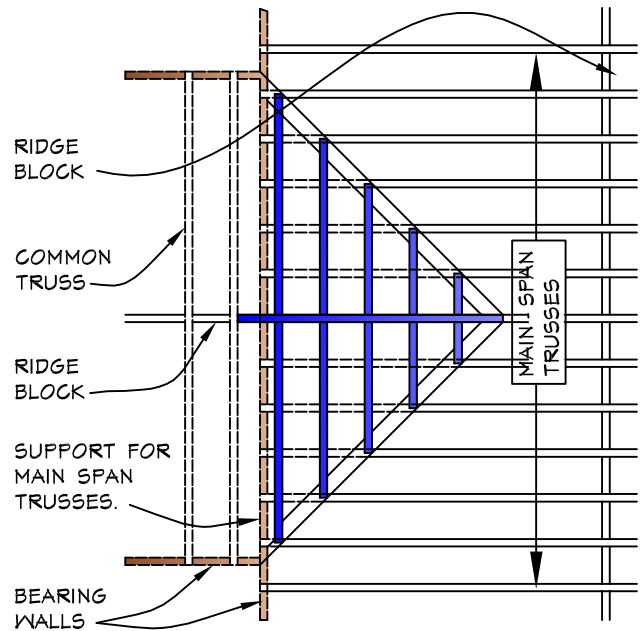


CALIFORNIA VALLEY

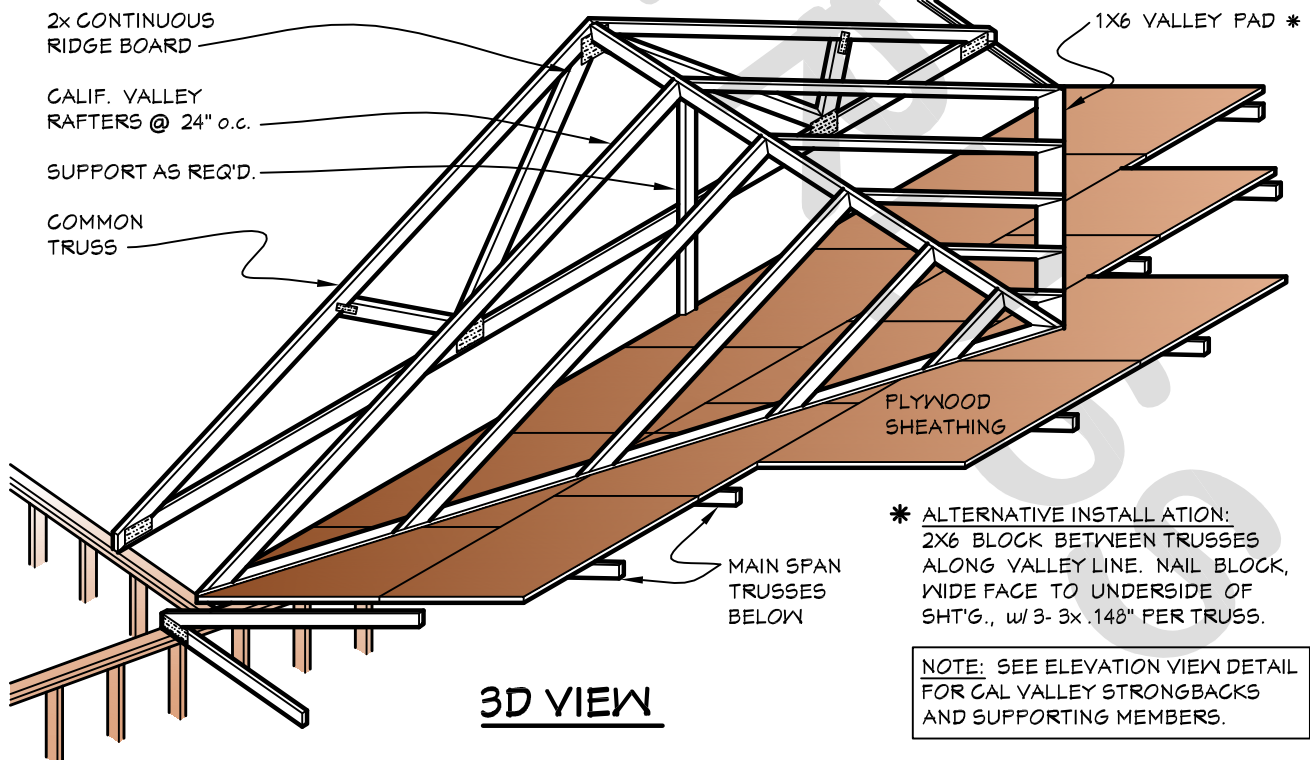


MAXIMUM 2x4 RAFTER SPANS WITHOUT SUPPORT IS 8'-0".

ELEVATION VIEW



PLAN VIEW



* ALTERNATIVE INSTALLATION:
2X6 BLOCK BETWEEN TRUSSES
ALONG VALLEY LINE. NAIL BLOCK,
WIDE FACE TO UNDERSIDE OF
SHT'G., w/ 3- 3x .148" PER TRUSS.

NOTE: SEE ELEVATION VIEW DETAIL
FOR CAL VALLEY STRONGBACKS
AND SUPPORTING MEMBERS.

3D VIEW